



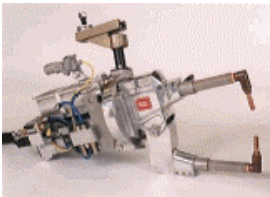
www.bfentron.co.uk

typical applications

automotive



manual stations



robot stations

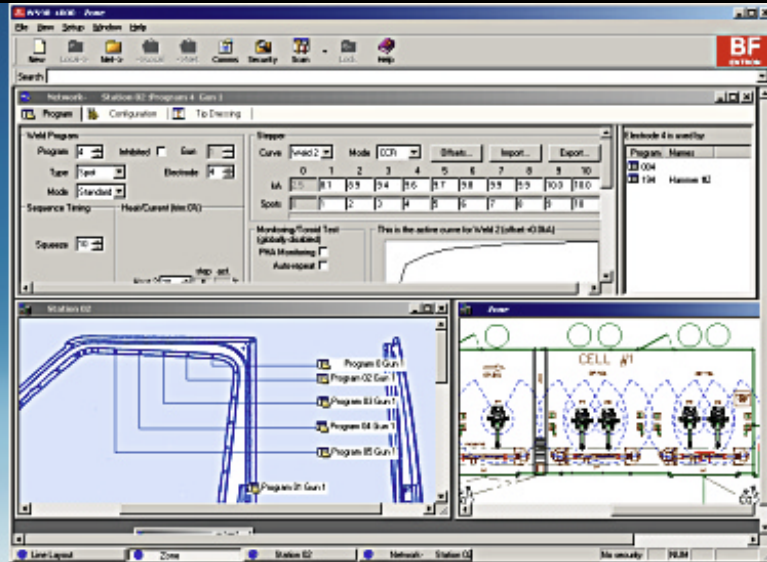


multiwelders



WS98-4000 PC software

data sheet



Take control of your welding data

Using all the features of Microsoft® Windows®, WS98-4000 allows you to program, monitor and archive the data in your WS4000 welding controls. Connection to the timers can be via simple RS-232 link or any one of a number of network interfaces. The interface is customizable to mimic your own application and enhanced security features make sure your system runs smoothly. For any number of WS4000s, WS98 is an essential partner.

features	benefits
easy to use	helps you get your work done
programming, configuration and status windows	parameters arranged in functional groups
customizable displays	organise your data how you want it
enhanced tooltips	detailed explanation of parameters
built-in printing and archiving	record and store all of your settings
multi-document interface	check the settings from several locations
context-sensitive help	explains all features

options

none

configurations

none

WS98-4000 PC software

data sheet

communications	stations	system requirements
RS232	1	PC with a 486DX or higher running Microsoft Windows 98, 2000, XP or NT4 build 1381:service pack #4. Microsoft Internet Explorer 3 is required for HTML help functions. 10 MB of available hard-disk space 1024 x 768 16-bit colour display Microsoft mouse or compatible pointing device
Profibus FMS	48	
ControlNet	48 + 50	
Ethernet	48	
Interbus PCP	48	
security	users	
supervisors	5	
superusers	20	
users	100	
workgroups	10	
audit trails		
log files		
customizable interfaces	quantity	
plant layout	1	
zone layout	10	
station layout	100	
station names	100	
program names	unlimited	
multiple languages	3	
archiving		
network/station/names backup/restore		
Microsoft Excel compatible		
station features		
programming		
monitoring		
status information		
printing		
backup/restore		
names		
security		
network features		
status scan		
electrode scan		
electrode areas		
plant layout		

All product names mentioned herein may be trademarks of their respective companies.
Information in the document is subject to change without notice.

91-10-00-00-18 rev. 1 © 2003 BF ENTRON Ltd.