



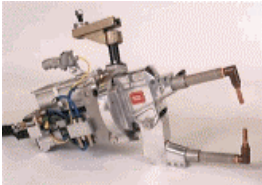
www.bfentron.co.uk

typical applications

projection welders



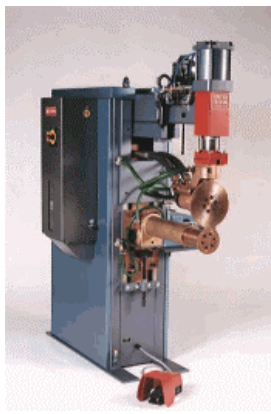
manual stations



robot stations

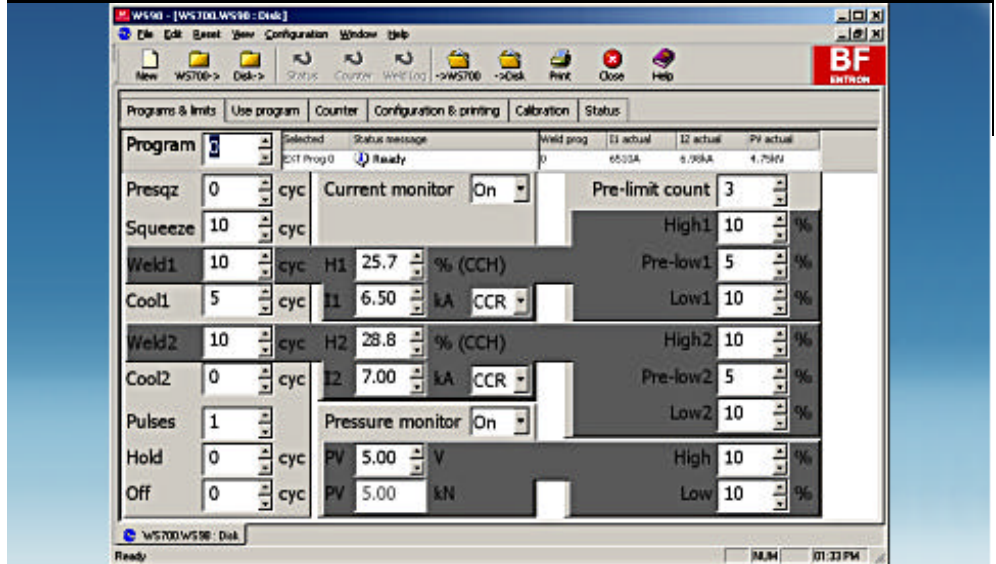


spot/seam welders



WS98-700 PC software

data sheet



Take control of your welding data

Using all the features of Microsoft® Windows®, WS98-700 allows you to program, monitor and archive the data in your WS700 welding control. Connection to the timer is via a fast but simple RS-232 link (cable supplied) and the settings are displayed in tabbed windows, with each window showing only the parameters relevant to your application. For any number of WS700s, WS98 is an essential partner.

| features | benefits |
|---|---|
| easy to use | helps you get your work done |
| programming, configuration and status windows | parameters arranged in functional groups |
| intelligent displays | reduce on-screen clutter |
| enhanced tooltips | detailed explanation of all parameters |
| built-in printing and archiving | record and store all of your settings |
| multi-document interface | check the settings from several locations |
| context-sensitive HTML help | explains all features |

options

none

configurations

none

WS98-700 PC software

data sheet

| | | | |
|---|---|--|---|
| program and limits display | | calibration display | |
| status information | ✓ | status information | ✗ |
| selected program | ✓ | selected program | ✗ |
| results of the last weld | ✓ | results of the last weld | ✗ |
| sequence parameters | ✓ | CT, toroid and pressure calibration parameters | ✓ |
| monitoring parameters | ✓ | intelligent layout | ✓ |
| intelligent layout | ✓ | printing | ✓ |
| printing | ✓ | disk access | ✓ |
| disk access | ✓ | status/counter/log reset | ✗ |
| status/counter/log reset | ✓ | context-sensitive help | ✓ |
| context-sensitive help | ✓ | | |
| use program display | | status display | |
| status information | ✗ | status information | ✓ |
| selected program | ✓ | selected program | ✓ |
| results of the last weld | ✗ | results of the last weld | ✓ |
| intelligent layout | ✓ | force output and force feedback | ✓ |
| printing | ✓ | counter status | ✓ |
| disk access | ✓ | i/o status | ✓ |
| status/counter/log reset | ✗ | printing | ✓ |
| context-sensitive help | ✓ | disk access | ✓ |
| | | status/counter/log reset | ✓ |
| | | context-sensitive help | ✓ |
| counter display | | system requirements | |
| status information | ✗ | PC with a 486DX or higher running Microsoft Windows 98, 2000, XP or NT4 build 1381:service pack #4. Microsoft Internet Explorer 3 is required for HTML help functions. | |
| selected program | ✗ | 5 MB of available hard-disk space | |
| results of the last weld | ✗ | 800x600 16-bit colour display | |
| intelligent layout | ✓ | Microsoft mouse or compatible pointing device | |
| printing | ✓ | | |
| disk access | ✓ | | |
| status/counter/log reset | ✗ | | |
| context-sensitive help | ✓ | | |
| configuration & printing display | | | |
| status information | ✗ | | |
| selected program | ✗ | | |
| results of the last weld | ✗ | | |
| application-specific parameters | ✓ | | |
| intelligent layout | ✓ | | |
| printing | ✓ | | |
| disk access | ✓ | | |
| status/counter/log reset | ✗ | | |
| context-sensitive help | ✓ | | |

All product names mentioned herein may be trademarks of their respective companies. Information in the document is subject to change without notice.

91-10-00-00-14 rev. 1 © 2003 BF ENTRON Ltd.